

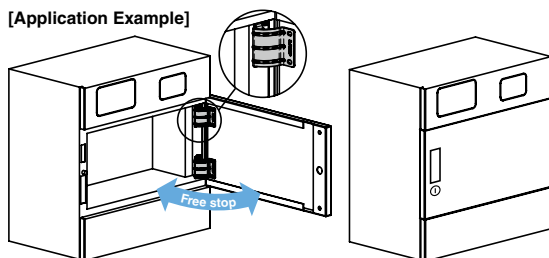
ONE WAY CONCEALED TORQUE HINGE HG-TQU15



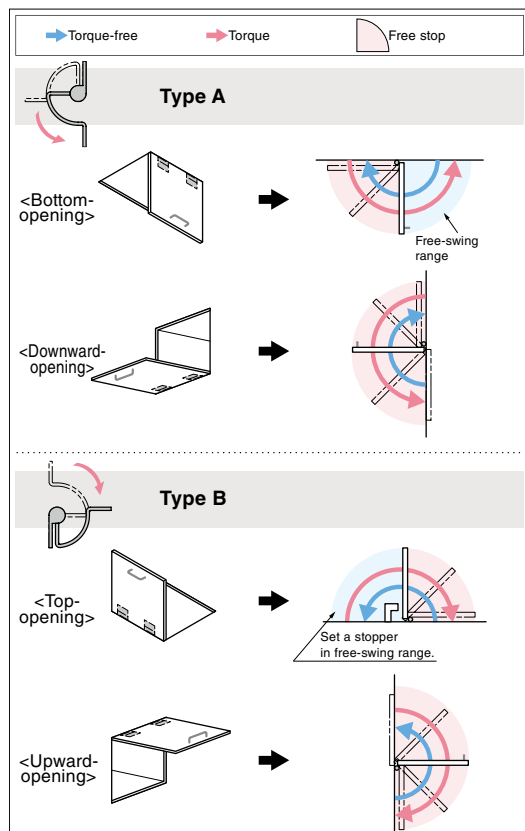
Free stop

Passed 20,000 open/
close private cycle tests

[Application Example]



[Torque Direction and Free-stop Range]



*Figure shows torque direction.
Check the actual opening and closing angles in the Reference Dimensions.

- Friction in one direction only: Allows for frictionless handling of the doors in the opposite direction.
- Can be used horizontally or vertically.

[Applications]

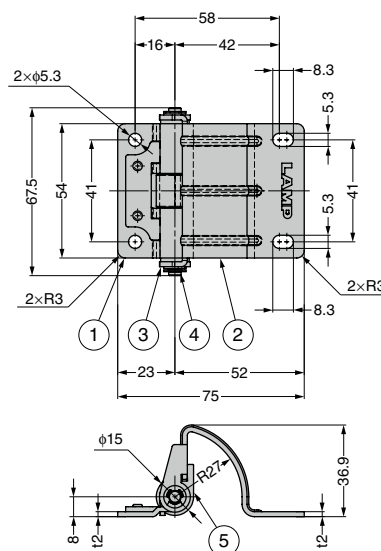
- Medical equipment, inspection equipment, various automatic devices

[Remarks]

- Be sure to read the "Cautions" 1.
- Set a stopper in free-swing range (see the figure below for details).
- When installing, ensure that both hinge shafts are aligned.
- In consideration of torque decrease due to aging, temperature, humidity, etc., the torque at shipping is set relatively high.
- A caution sticker is attached to keep the hinge from opening and closing during transport. Remove when installing the product.
- Install a catch or latch as well to keep lids or doors from sagging open.

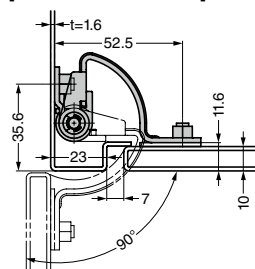
[Recommended Screws]

- M5 screws



No.	Part Name	Material	Finish/Colour
①	Body	Stainless Steel (SUS304)	Barrel Polished
②	Base		
③	Fixing Tube	Polyacetal (POM)	Black
④	Shaft	Stainless Steel	-
⑤	Housing	Zinc Alloy	Nickel

[Reference Dimensions]



Selection Tool



Sasuga-kun

RoHS	CAD	Item Code	Item Name	Torque Working Direction	Torque N·m	Torque kgf·cm	Weight (g)
		170-049-852	HG-TQU15-A	Hinge Opening Direction	1.5 \pm 40% 20%	15.3 \pm 40% 20%	145
		170-046-656	HG-TQU15-B	Hinge Closing Direction			

Refer to 1 : P.43