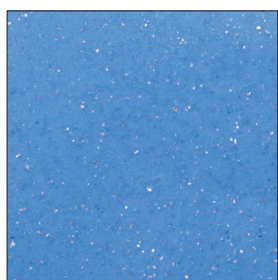
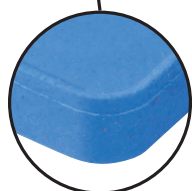


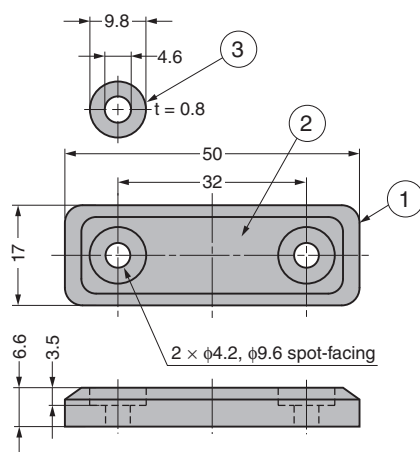
# METAL-DETECTABLE SEALED MAGNETIC CATCH MC-MPM50BU Food Sanitation Act Compliant Material



The silicone rubber contains metal powder.



The edge is slightly raised.  
This allows for a tight seal between the mounting surface and the catch in order to prevent debris collection.



The blue colour is rare in nature and easy to spot.



- Metal powder contained in silicone rubber allows for detection by metal detectors (if present in food) in case of unintentional breakage of the catch.
- Blue colour for simple visual verification.
- Compliant with the Food Sanitation Act.
- Outer silicone rubber reduces the noise of closing doors.
- Because the fixing holes are reinforced with washers, the silicone rubber is less likely to split when fastened with screws.

## [Applications]

- Food processing machinery

## [Remarks]

- Be sure to read the handling precautions **1** before use.
- Do not use in strong acid or strong alkali environments.
- Do not use in locations constantly exposed to steam, hot water, or cold water.
- Use in environments at 80°C or below.
- Abrasion to surface may cause erosion. Mount to flat surfaces only.
- The recommended tightening torque value for mounting is 39 N-cm (4 kgf-cm).
- The size of the metal fragments which can be detected varies with the settings and performance of the metal detector. After checking the actual product, verify use with equipment.

## [Recommended Screws]

- Truss screws M4



## Safety

The body uses material compliant with the Food Sanitation Act.

No.	Part Name	Material	Finish/Colour
①	Body	Silicone Rubber (Q)	Blue
②	Magnet	Neodymium	Nickel Plating
③	Washer	Stainless Steel (SUS304)	Plain

## Detectable by Machines



A video demonstrating the detection process is available.

## [Body]

RoHS	CAD	Item Code	Item Name	Magnetic Force N	Magnetic Force kgf	Weight (g)
●	●	140-053-308	MC-MPM50BU	39.2	4	16

Refer to **1**: No.400 P.431, **2**: No.400 P.464

## [Counter Plate] Sold Separately **2**

RoHS	CAD	Item Code	Item Name
●	●	140-050-138	AS-68
●	●	140-050-149	MC-JM49